

Technical Data Sheet

Performance & Simplicity in One Package

The StorMagic™ SM Series is the first data storage solution meticulously engineered for both high performance and unprecedented simplicity. Here's how.

PERFORMANCE

The SM Series is the integral component of a powerful iSCSI SAN solution. Combined with an industry standard server platform and the StorMagic Windows-based management console, these three elements work together to give you the benefit of total iSCSI SAN functionality, including:

- Support for multiple servers
- Dynamic data storage—allocated to and shared among servers
- Protection against disk failure using RAID (0, 1, 5, 6)
- Monitored capacity usage and throughput to identify “hot spots”
- Flexibility (from a 1U 4-drive system to multiple terabytes)
- Comprehensive usage statistics
- Snapshot support with included VSS (Volume Shadow Copy Services)
- Full compatibility with Windows Multi-Path I/O (MPIO) framework
- Support for SCSI Persistent Reservations
- Certified for use with the Microsoft Cluster Server
- Compliant with Microsoft’s “SimpleSAN” program

SIMPLICITY

The StorMagic SM Series is designed for complete ease of use for small- to mid-sized organizations—from installation and configuration to day-to-day management. Benefits include:

- Intuitive storage management from a single window
- Installation in minutes, requiring no storage management expertise
- Ability to add to your existing network with no disruption to users
- Remote volume access and management
- Non-disruptive data migration from local server volumes to networked storage volumes
- Self-managing storage volumes—growing automatically as they fill up
- Auto-transiting of data to balance and optimize capacity and throughput
- OS-agnostic functionality (Windows, MacOS, Linux, Novell Netware)
- Management via Windows or Web-based GUI
- Back-up functionality with RSS-compliant third-party software
- Installation, sharing, management and protection from a single interface

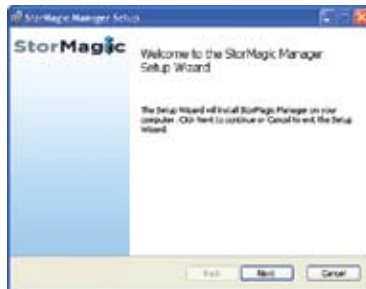
10 Things You'll Never Have to Do Again

1. Track IQNs and WWNs.
2. See a “Disk Full” message.
3. Open 3 applications and execute 20 steps to set up a new storage disk.
4. Open 3 different interfaces to store, share, manage and protect data.
5. Repeatedly email employees that “the server will be down” (and hear the groans).
6. Learn yet another new set of technology.
7. Listen to your staff complain about “managing disk space.”
8. Update shares, permissions and drive letters every time you move data to a new disk.
9. Constantly monitor storage disks and manually add space.
10. Schedule another time-consuming training session for your overworked staff.



The Inside View

INSTALLATION
WELCOME SCREEN



The StorMagic SM Series is designed for easy installation and configuration. Start by plugging the SM Series appliance into your existing office network using an Ethernet cable, then follow an easy 6-step configuration wizard.

PASSWORD
PROTECTION
AUTHORIZATION



StorMagic's Windows-based interface is familiar and easy to read. It's also secure—you'll be asked to set a strong password to prevent unauthorized access to the appliance.

DISK CREATION
SETUP FUNCTION



Setting up a new disk is amazingly easy. The SM Series dramatically simplifies setup by consolidating three applications and 20 different steps into a few mouse clicks.

SUCCESSFUL
INSTALLATION
INTERFACE



The SM Series allows you to move existing data to network storage without disruption to employees. Plus, it “self-manages”—automatically freeing server space and tuning your storage to capacity and performance changes.



Technical Highlights

TIME-SAVING AUTOMATION

With the SM Series, data storage becomes a single pooled resource, with volumes automatically distributed to optimize network performance. You can set up storage volumes to be self-managing and grow as they fill up—while StorMagic’s monitoring software runs in the background to track disk usage and extend volumes that reach pre-defined thresholds.

THE BENEFIT: Time spent on data management is reduced to an absolute minimum.

SEAMLESS SNAPSHOTS

Any StorMagic disk can be backed up using third-party backup software. However, efficient backup benefits from snapshots. StorMagic supports snapshots of StorMagic disks—and includes a VSS (Volume Shadow Copy Services) provider to ensure application consistency on a Windows platform.

THE BENEFIT: Seamless integration and no downtime required for VSS aware applications.

SMART STORAGE MANAGEMENT

The SM Series can monitor and manage multiple data systems—locally or remotely—using StorMagic’s Storage Manager for Windows or a Web interface. The GUI accesses storage event logs and immediately displays any faults. A “call home” feature can email or text events to system administrators—or even to a remote management organization.

THE BENEFIT: Quick troubleshooting—even from remote locations.

FLEXIBILITY & INTEROPERABILITY

The SM Series performs on multiple servers reading or writing volumes simultaneously across multiple Ethernet ports. It is fully compatible with the Windows Multi-Path I/O (MPIO) framework, supports SCSI Persistent Reservations, is certified for use with the Microsoft Cluster Server, complies with Microsoft’s ‘SimpleSAN’ program, and includes a VDS (Virtual Disk Services) provider for integration with the Microsoft SAN Manager and other third-party management applications. In addition, the StorMagic appliance is “OS agnostic,” providing iSCSI storage to systems running Windows, MacOS, Linux or Novell NetWare.

THE BENEFIT: Peace of mind that your system will “play well” with other applications and grow with you.



STORMAGIC SM SERIES PRODUCT SPECIFICATIONS

Description	The StorMagic SM Series iSCSI storage solution is a consolidated approach that allows you to store, share, manage and protect your data all from a single interface.
Integrated Application Data Storage (iSCSI SAN)	Yes
iSCSI / SCSI Support	Compliant with iSCSI standard, RFC 3720 Authentication: One-way CHAP / mutual CHAP iSNS 256 Targets per appliance 1024 simultaneous sessions Target Access Control Lists SCSI Persistent Reservations Support for volumes > 2 TB
Integrated Data Protection	Yes
RAID	Hardware RAID Controller RAID levels 0, 1, 5 and 6 Online Capacity Expansion
Snapshot	256 snapshots per appliance VSS Provider for Windows
OS Support	Windows 2003/XP Linux (RedHat/SuSE) MacOSX (with Atto initiator) Novell NetWare
Windows Support	One-step provisioning Dynamic migration (DAS-SAN and SAN-SAN) Auto-expansion of volumes Microsoft SimpleSAN Certification VDS and VSS Providers MPIO support
Storage Licenses Included	Base configuration includes connection license for up to 2 Microsoft Enabled Servers. Incremental connectivity for Microsoft Enabled Servers are available at the 4, 6 and unlimited level.
Management	StorMagic Disk Manager for Windows Web GUI Wizard-based installation Volume usage statistics Event log Call home (email notification) Remote management Administrator authentication
Remote Management	Yes
Customer Profile	Small to medium organizations

For more information, regarding StorMagic SM Series software, please contact us at 1.800.517.5282 or visit www.StorMagic.com.